

Leadership Positions

**NCWU Annual Meeting
June 28, 2004**

N|WOMEN
C|UNITED

Who are we?

N|WOMEN
C|UNITED

Who is NCWU?

- Members are organizations
 - ◆ Named representatives may vote
- Supporters
 - ◆ Member organizations' volunteers and staff
 - ◆ "Friends of NCWU," i.e. contributors
- Leaders can come from all supporters!

N|WOMEN
C|UNITED

Who leads NCWU?

N|WOMEN
C|UNITED

Executive Committee **NEW**

- | | |
|------------------------|--|
| ■ President | ■ In contact with all committees |
| ■ First VP | ■ Makes decisions between board meetings |
| ■ Second VP NEW | ■ Offloads administration from member meetings |
| ■ Secretary | |
| ■ Treasurer | |

N|WOMEN
C|UNITED

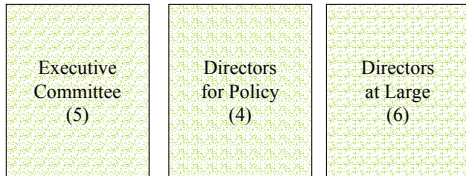
Policy Council **NEW**

- 4 board members are Directors for Policy
- With the President form the Policy Council
- Responsible for protecting the value of "NCWU says ..."

- No effect on sharing info among members

N|WOMEN
C|UNITED

Board at a Glance



- Board of 15 (or 16 with past president)
- Elected by the membership

N|WOMEN
C|UNITED

Appointed Committees

- Standing Committees/Board member chair
 - ◆ Program
 - ◆ Membership
 - ◆ Communications
 - ◆ Finance
- Other
 - ◆ Elections, ad hoc

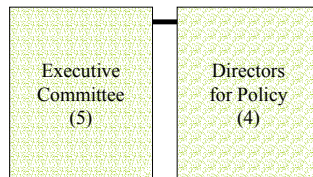
N|WOMEN
C|UNITED

Governance Committee

- Elected by the membership (5 positions)
 - ◆ 2 board members
 - ◆ 2 member representatives who are not on the board
- Serves as the "nominating committee"
- Responsible for the health of the board

N|WOMEN
C|UNITED

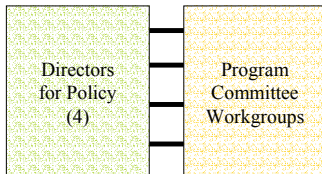
How are these linked?



President serves on Policy Council with the Policy Directors

N|WOMEN
C|UNITED

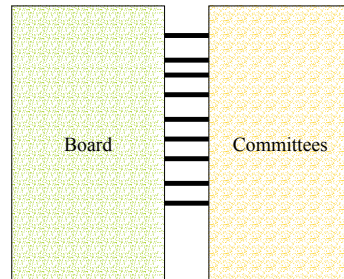
How are these linked?



Policy Directors may serve as, or at least work closely with, workgroup chairs

N|WOMEN
C|UNITED

How are these linked?



Board members chair the committees

There is exec. comm. liaison for each committee

N|WOMEN
C|UNITED

The membership elects

- 5 members of executive committee
- 4 directors for policy
- 6 directors at large

- 5 members of governance committee
 - ◆ At least 2 from the 15 board members
 - ◆ At least 2 not on the board

N|WOMEN
C|UNITED

NCWU needs

- Board members
- Committee members
- Local event organizers
- Advocates willing to share information
-

- Y'all come! And invite your friends!

N|WOMEN
C|UNITED

In closing

The problems are enormous and the resources are miniscule, making collaboration all the more critical.

Susan McGee Bailey
Wellesley Centers for Women
Research & Action Report
Spring/Summer 2004

N|WOMEN
C|UNITED